

USA Junior Olympic Festival
August 15, 16, 17, 2005
Cottage Park Yacht Club
Winthrop, Massachusetts

SAILING INSTRUCTIONS

1 RULES

- 1.1 The regatta will be governed by the rules as defined in *The Racing Rules of Sailing, the Notice of Race and these Sailing Instructions*.
- 1.2 The prescriptions of the US national authority will apply.
- 1.3 Racing Rule 42 Means of Propulsion will be changed as follows: During and immediately after tacking or gybing, a boat's crew may move their bodies to roll the boat, provided that the boat's mast does not move away from the vertical more than once. This replaces Racing Rule 42.3a.
- 1.4 Racing Rule 40.1 applies at all times while afloat. **Competitors shall wear lifejackets whenever they are in boats, floating docks, rowboats or launches.** This changes the Part 4 preamble.

2 NOTICES TO COMPETITORS

Notices to competitors will be posted on the official notice board located inside the main hall of Cottage Park YC.

3 CHANGES TO SAILING INSTRUCTIONS

Any change to the sailing instructions will be posted before 0900 on the day it will take effect, except that any change to the schedule of races will be posted by 2000 on the day before it will take effect.

4 SIGNALS MADE ASHORE

- 4.1 Signals made ashore will be displayed at the flagpole on the CPYC head pier.
- 4.2 When the **Postponement** flag is displayed ashore, it means that all boats shall not leave the dock, beach or mooring. When the **Postponement** flag is lowered from the flagpole ashore it means that the next warning signal will occur in not less than 45 minutes.

5 SCHEDULE OF RACES AND ACTIVITIES

5.1 August 15, 16, 17

<i>Date</i>	<i>Time</i>	<i>Activity</i>
Monday		
8/15	1000-1600	Boat set up, Check in /Registration, Housing assignments
8/15	1600	Opti and 420 seminar- all are welcome to attend
8/15	1800	Dinner for all competitors in Main Hall at CPYC Welcome, Class Flags raised, Announcements /Rules of Club
Tuesday		
8/16	0730-0830	Breakfast served at CPYC
8/16	0830	Competitors Meetings for each line in Main Hall at CPYC
8/16	0930	Harbour Start
8/16	1030	Racing begins on each course
8/16		Lunch provided on the water
8/16	1600	No races to be started after this time
8/16	1800	Dinner & Seminar by Mike Kalin, US Sailing Youth Director of Development and Varsity sailing Coach at MIT. Followed by a Dance at CPYC.
Wednesday		
8/17	0730-0830	Breakfast served at CPYC
8/17	0900	Harbour Start
8/17	1000	Racing begins on each course
8/17		Lunch provided on the water
8/17	1400	No races to be started after this time
8/17	1530	BBQ at CPYC
8/17	1630	Awards and Trophies in Main Hall at CPYC

5.2 Each class will attempt to run as many races as practicable each day. No more than nine races will be completed in each class.

5.3 On the last day of the regatta no warning signal will be made after 1400.

6 CLASS FLAGS

Class flags will be:

<i>Class</i>	<i>Flag</i>
420	420 on a white field
420 Novice	420 on a green field
Laser Full Rig	Class insignia on a white field
Laser Radial	Class insignia on a green field
Opti	Class insignia on a white field
Opti Novice	Class insignia on a green field
N-10	N-10 on a white field
N-10 Novice	N-10 on a green field

7 RACING AREAS

Attachment A shows the location of racing areas.

8 THE COURSES

- 8.1** The diagram in Attachment B show the course and the order in which marks are to be passed, and the side on which each mark is to be left.
- 8.2** To maintain a course configuration with the changing wind direction or to change course length marks may be moved as necessary, but no mark shall be moved when any boat is on the leg that it terminates. Racing rule 32.2 is deleted.

9 MARKS

- 9.1** On the Course for 420s and Lasers the Starting Mark as well as Marks 1, 2, and 3 will be orange inflatable.
- 9.2** On the Course for Opti Red, White and Blue the Starting Mark as well as Marks 1, 2, and 3 will be yellow inflatable.
- 9.3** On the Course for Opti Novice and N-10 Novice the Starting Mark as well as Marks 1, 2, and 3 will be orange balls.
- 9.4** On the Course for N-10s the Starting Mark as well as Marks 1, 2, and 3 will be pink balls.
- 9.5** On all courses the Finishing marks will be an anchored Race Committee boat at the starboard end and an adjacent **BLUE** West marine inflatable.

10 THE START

- 10.1** Races will be started by using RRS Appendix Q - Sound-Signal Starting System with the warning signal given 3 minutes before the starting signal.
- 10.2** On all courses the starting line will be between a staff displaying an orange flag on the race committee signal boat at the starboard end and the adjacent starting mark.
- 10.3** Boats whose warning signal has not been made shall avoid the starting area.
- 10.4** A boat starting later than 5 minutes after her starting signal will be scored Did Not Start. This changes Racing Rule A4.

11 INDIVIDUAL RECALLS

When, at a boat's starting signal, any part of her hull, crew or equipment is on the course side of the starting line or she must comply with Racing Rule 30.1, the race committee shall promptly display flag X . The flag shall be displayed until all such boats are completely on the pre-start side of the starting line or its extensions and have complied with Racing Rule 30.1, if it applies, but not later than two minutes after the starting signal, whichever is earlier. The Race Committee may also attempt to notify individual boats by hailing their sail or bow numbers . This replaces Racing Rule 29.1 & Changes Racing Rule Q6.

12 GENERAL RECALLS

The race committee may signal a general recall by multiple sounds and the hail of “general recall” and need not display the First Substitute flag. Following a general recall, the warning for any subsequent start may be initiated at any time. This changes Racing Rule 29.2. After a general recall, the Round-an-End Rule, Racing Rule 30.1, shall apply and no flag signal need be given. This changes Racing Rule 30.1.

13 CHANGE OF THE NEXT LEG OF THE COURSE

To change the next leg of the course, the race committee will move the original mark or the finishing line to a new position. To maintain a course configuration relative to the wind direction or change course length marks may be moved as necessary, but no mark shall be moved when any boat is on the leg that it terminates. A leg of the course shall not be deleted. This deletes Racing Rule 32.2.

14 THE FINISH

On all courses the finishing line will be between an anchored Race Committee boat at the starboard end and an adjacent **BLUE** West marine inflatable.

15 TIME LIMITS

Boats failing to finish within 15 minutes after the first boat sails the course and finishes will be scored Did Not Finish. This changes rules Racing Rules 35 and A4.

16 PROTESTS AND REQUESTS FOR REDRESS

- 16.1** Racing Rule 61.1a is amended as follows: A boat intending to protest another boat shall inform the other boat at the first reasonable opportunity by **hailing twice** the word ‘**protest**’ and additionally **hailing twice** the identifying sail number of the boats concerned.
- 16.2** Competitors intending to file a protest for an infraction of Parts 1-4 of the RRS must immediately report their intention to the RC boat anchored at the finish line **prior to** consulting any coaches/ parents.
- 16.3** Protest forms are available at the registration desk adjacent to the official notice board in the main hall at CPYC. Protests shall be delivered back to the registration desk within the protest time limit.
- 16.4** Hearings will be held in the jury room, located at the top of the stairs closest to the water at CPYC, beginning as soon as possible or not later than 5 minutes after the protest time limit has expired.
- 16.5** Notices of protests by the race committee or protest committee will be posted to inform boats under Racing Rule 61.1(b).
- 16.6** A list of boats that have acknowledged breaking rule 42 or have been disqualified by the protest committee will be posted before the protest time limit.
- 16.7** Breaches of instructions 1.4, 11 and 18 will **not** be grounds for a protest by a boat. This changes rule 60.1(a). Penalties for these breaches may be less than disqualification if the protest committee so decides.

- 16.8** On the last day of the regatta a request for reopening a hearing shall be delivered
- (a) within the protest time limit if the party requesting reopening was informed of the decision on the previous day;
 - (b) no later than 30 minutes after the party requesting reopening was informed of the decision on that day.
- This changes Racing Rule 66.

17 SCORING

- 17.1** One race is required to be completed to constitute a series.
- 17.2** A boat's series score will be the total of her race scores.
- 17.3** If more than six races are completed a boat's worst score may be discarded.

18 SAFETY REGULATIONS

- 18.1** Check-out and check-in: All competitors **must** sail between Red Nun 2 and an anchored boat with a large CPYC burgee flying from it on their way to the racing area as well as on their return back from the racing area.
- 18.2** Prior to the warning signal of the first race of each day all competitors **must** additionally sail by the stern of their RC signal boat on starboard tack, hail their sail number clearly and be acknowledged by the RC personnel.
- 18.3** A boat that retires from a race shall notify the race committee as soon as possible.

19 REPLACEMENT OF CREW

Substitution of competitors will not be allowed without prior written approval of the protest committee.

20 EQUIPMENT AND MEASUREMENT CHECKS

A boat or equipment may be inspected at any time for compliance with the class rules and sailing instructions. On the water, a boat can be instructed by a race committee measurer to proceed immediately to a designated area for inspection.

21 SUPPORT BOATS

- 21.1** Team leaders, coaches and other support personnel shall stay outside areas where boats are racing from the time of the preparatory signal for the first class to start until **all boats have finished** or the race committee signals a postponement, general recall or abandonment.
- 21.2** Team leaders, coaches and other support personnel shall stand by and be available to render assistance without hesitation to any and all capsized, disabled or struggling competitor.

22 RADIO COMMUNICATION

A boat shall neither make radio or cell phone transmissions while racing nor receive radio nor cell phone communications not available to all boats. The Race Committee will monitor CH 71 on the Laser and 420 Course, CH 72 on the Opti Red, White and Blue Course, Channel 73 on the N-10 Course and Channel 78 on the Novice Opti and N-10 Course.

23 PRIZES

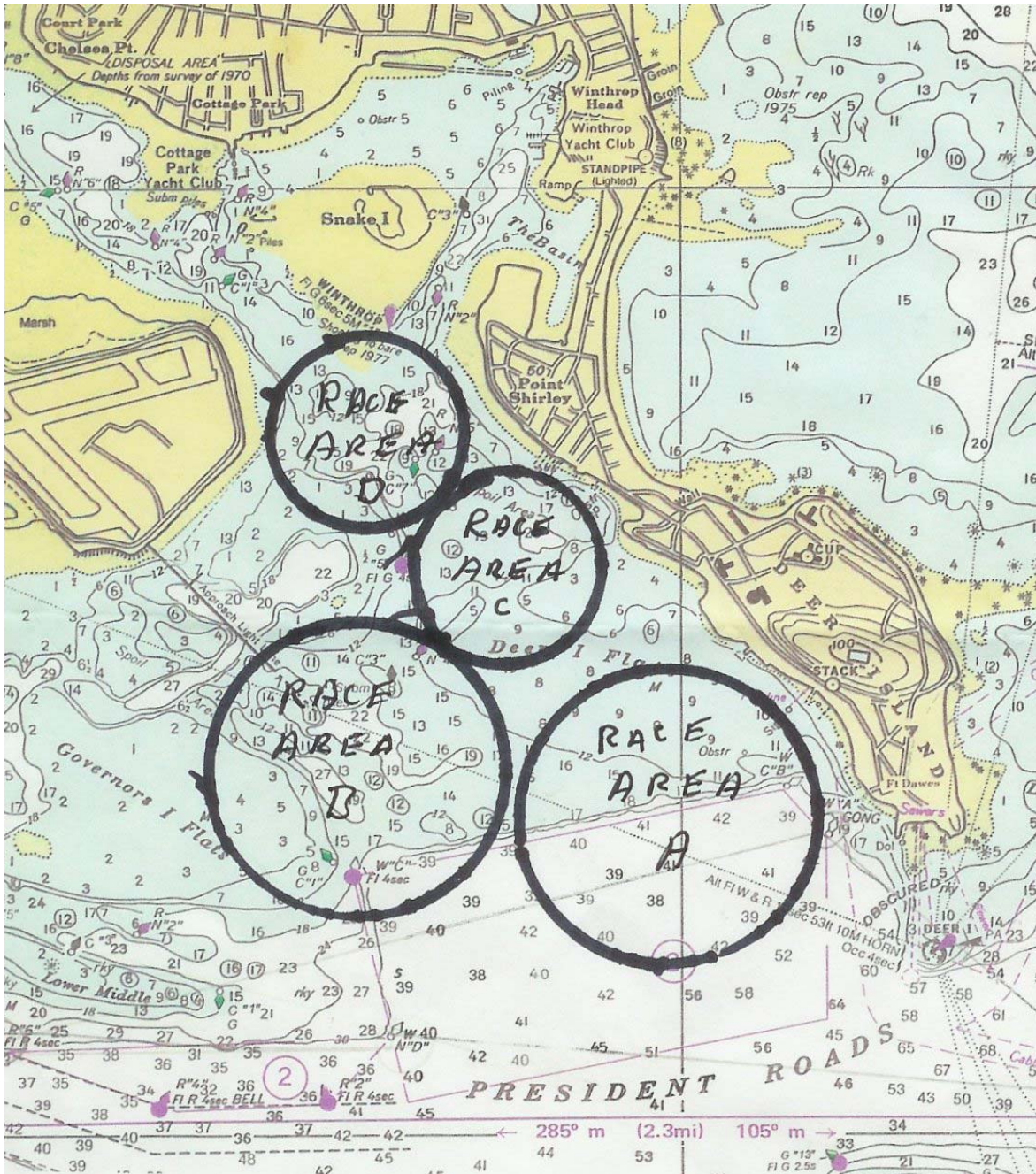
USA Junior Olympic Medals will be awarded to the top three competitors in each class.

24 DISCLAIMER OF LIABILITY

Competitors participate in the regatta entirely at their own risk. See rule 4, Decision to Race. The organizing authority will not accept any liability for material damage or personal injury or death sustained in conjunction with or prior to, during, or after the regatta.

Attachment A- Racing Areas Chart

Respect the two red nuns in front of the club as well as Snake Island. Also do not pass between the white “keep away” buoys and the airport.



Attachment B- The Course

The Modified Triangle-

Start between an RC start signal boat with an orange staff and the adjacent race mark.

Sail to Windward and Round Mark 1 to port.

Proceed to Marks 2 and 3 and round to port.

Finish to Windward between the RC finish boat displaying an orange flag as well as a blue flag and the adjacent BLUE west marine inflatable.

The angle between marks 1, 2 and 3 may be adjusted by the RC as they see fit.

Addendum B

Modified Port Triangle Course Diagram

